

# INSTALLATION INSTRUCTIONS

## Rear Wheel Well Inner Liner

### CHEVY / GMC 2014 - 2018

### LIK-52



**List of Contents:**

1 Pc. Passenger's side Inner Wheel Well Liner



**1 Pc. Installation Kit**

14 pc. Plastic (BIG) Christmas tree fastener



1 Pc. Driver's side Inner Wheel Well Liner



2 pc. Plastic (SMALL) Christmas tree fastener



1 pc. Installation Instructions.

**Tools Required**

No. 15 Torx screw driver  
for Mud Flap removal



**Preparations:**

Installation requires the Tires to be removed.  
Clean the interior panels of the rear Wheel  
house.

**Installation time  
estimated: 20 min.**

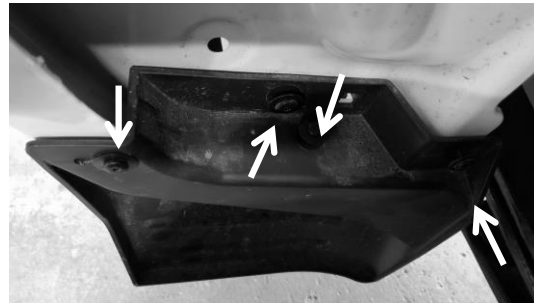
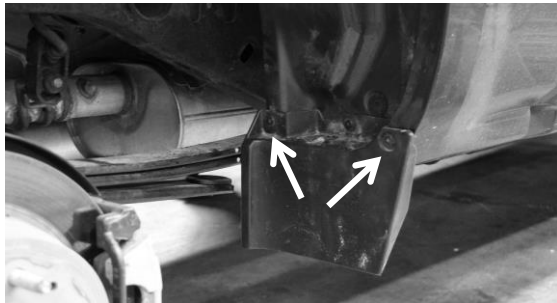
**Instructions:**

**1. PLEASE READ INSTRUCTIONS CAREFULLY BEFORE STARTING THE INSTALLATION.**

**NOTE:** One person can do the installation.

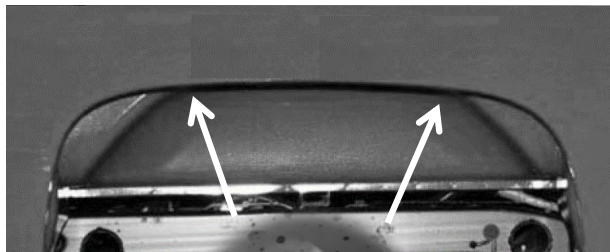
**2.** Starting on the Passenger's side, remove the tire.

**3. For Trucks with Factory Mud Flaps:** Using a No. 15 Torx screw driver, remove the screws that hold the Front Mud Flap. "2 or 4 depending on model year" **(Save the screws)**



**Note:** For Trucks without Factory Mud Flaps, Step 3 is not necessary

**4.** Locate and remove the 2 factory hole plugs in the wheel house upper area.



**5.** Mount the Inner Wheel Well Liner marked as (PS) inside the inner panel of the wheel house.



**Care and Maintenance Recommendations**

To protect the appearance of this product, wash with soap and water

# INSTALLATION INSTRUCTIONS

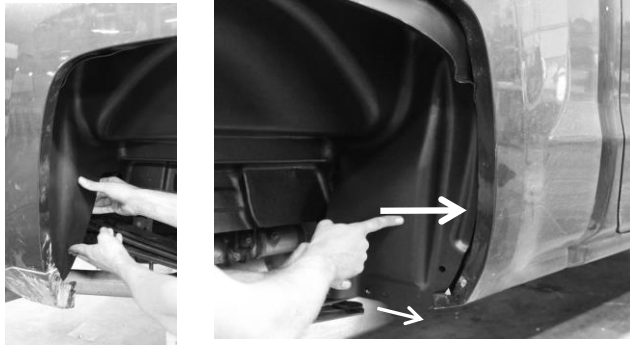
Rear Wheel Well Inner Liner

CHEVY / GMC 2014 - 2018

LIK-52



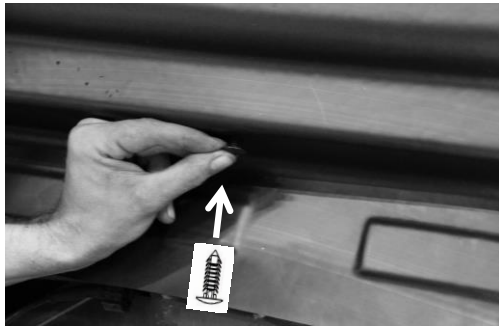
**6.** Insert the bottom sides behind the metal flange.



**7.** Insert the upper section of the plastic liner behind the metal flange, make sure all around edges are inside the metal wheel well house edge.



**8.** Locate the pre-drilled hole located below the frame edge. Install one SMALL push pin provided.



## For trucks WHITOUT factory Mud Flaps

**9a)** Locate the pre-drilled hole at the bottom front inner corner of the WW Inner Liner and install one BIG push pin provided



**10.** Locate 6 pre-drilled holes on the body of the Inner Wheel Well Liner, and install one of the BIG push pins in each hole



## For trucks WITH factory Mud Flaps

**9b)** Re-install the Mud Flap using the 2 or 4 screws saved in step 3.



**11.** Re- Install the tire

**Repeat steps 2 - 11 on driver's side**

### Care and Maintenance Recommendations

To protect the appearance of this product, wash with soap and water