

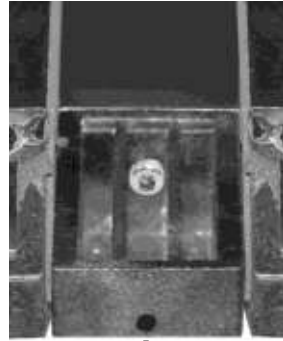
REPLACEMENT OF THE CAB DUAL HINGE END CAP

A. Remove the Hinge Seal out of groove

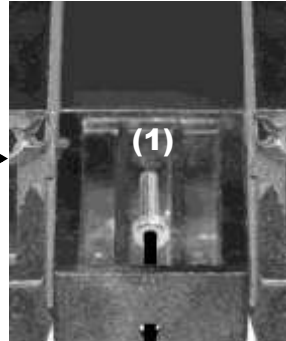


Hinge Seal Foam Roll

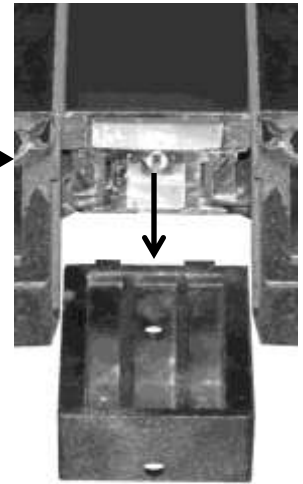
B. Remove the Screw (1) from the broken Cab Dual Hinge End Cap



Take Plug Out



Use Allen Wrench to take screw out



Pull Dual Hinge End Cap out

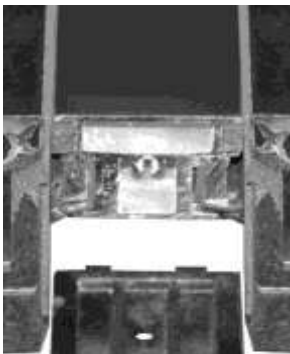


Screw



Plug

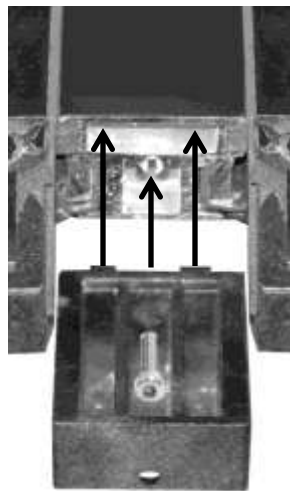
C. Push New Cab Dual Hinge End Cap into place



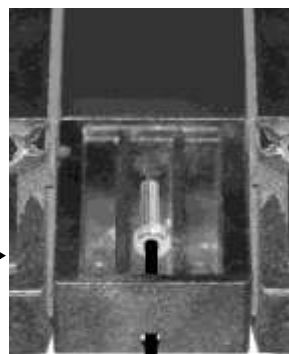
Screw



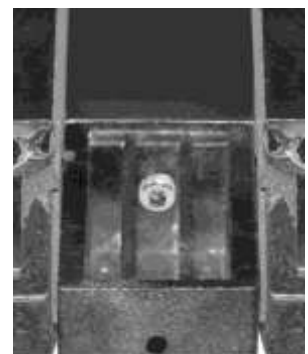
Plug



Cab Dual Hinge End Cap



Use Allen Wrench to put screw in



Put Plug In

D. Replace Hinge Seal back into groove and Dual Hinge Foam Piece back on top of Hinge End Cap



Bottom Dual Hinge Foam



Hinge Seal Foam Roll