



FORD F-250/350 2009-Current INSTALLATION INSTRUCTIONS Rear Wheel Well Inner Liner LIK39

List of Contents:

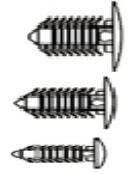
Qty.

- 1 Pc. Right Hand Inner Wheel Well Liner
- 1 Pc. Left Hand Inner Wheel Well Liner



Installation Kit

- 2 pc. Plastic Push Pin (Large)
- 2 pc. Plastic Push Pin (Medium)
- 12 pc. Plastic Push Pin (Small)
- 1 pc. Installation Instructions.



Tools Required

- *Drill with Socket/Driver 10mm
- *13 mm Wrench
- *Easy removal tool

Preparations:

Clean the interior panels of the rear Wheel house.

**Technical Support phone
line:
1-800-433-3604**

Instructions:

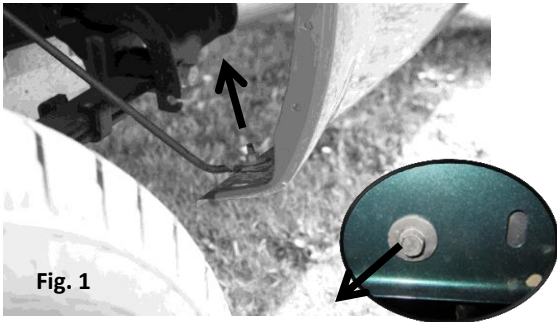
Installation time estimated: 15 - 20 min.

- PLEASE READ INSTRUCTIONS CAREFULLY BEFORE STARTING THE INSTALLATION.

NOTE: One person installation.

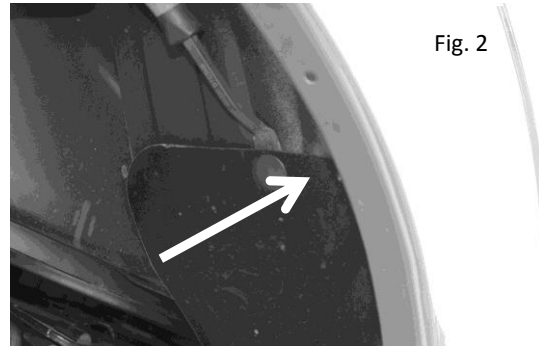
WHEEL WELL INNER LINER "Driver's Side"

- Starting on the Driver's side, remove the screws and nuts that holds the rods to the bottom of the wheel fender (Front and Rear) (See Fig. 1) "Save the screws and nut s "



3. Remove the plastic protector:

Using an easy removal tool, remove the push pins that holds the plastic protector (See Fig. 2)



- Insert the inner wheel well liner marked as (DS) under the inner panel of the wheel house. (See Fig. 3)



- Insert the bottom sides and the upper section of the plastic liner behind the flange around the wheel well house edge. (See fig. 4)



Care and Maintenance Recommendations

To protect the appearance of this product, wash with soap and water



www.ruggedliner.com

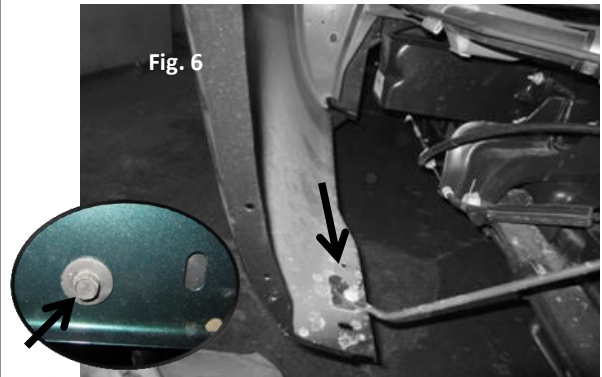


FORD F-250/350 2009-Current INSTALLATION INSTRUCTIONS Rear Wheel Well Inner Liner LIK39

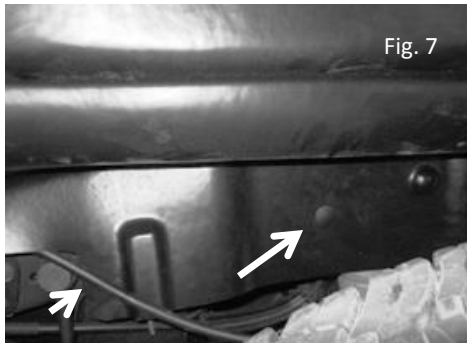
6. Locate the 6 pre-drilled holes and insert Small push pins. (See Fig. 5)



7. Re-install the screws and nuts that holds the rod to the bottom of the wheel fender (Front and Rear) (See Fig. 6)



8. Insert one of the Medium size Push Pins into the pre-drilled hole attaching the liner to the truck frame (See fig. 7)



Note: Place the cable in front of the plastic protector. (See fig 7)

WHEEL WELL INNER LINER "Passenger's Side"

9. For the passenger's side: Repeat steps 2 - 7 using the Inner Wheel Well Liner marked (PS)

10. Locate the 2 pre-drilled holes and align them with the holes on the truck's frame, then insert one of the Large size push pins into each one of them. (See Fig. 8)



Care and Maintenance Recommendations

To protect the appearance of this product, wash with soap and water



www.ruggedliner.com